

Diamond TUB & SHOWERS
www.diamondtubshowers.com where design and durability meet

Diamond Tub & Showers Spec Sheet

Model: TB 603377 L/R Drain (RH Shown)

Description: Tub/Shower Combo 1 Piece Unit

Specifications

Model #	Material	Wall Finish	Pieces	Drain	Apron Height	Net Weight Lbs.
TB 603377	Fiberglass/ Gelcoat	Smooth	1	LH/RH	17"	

Sump Data

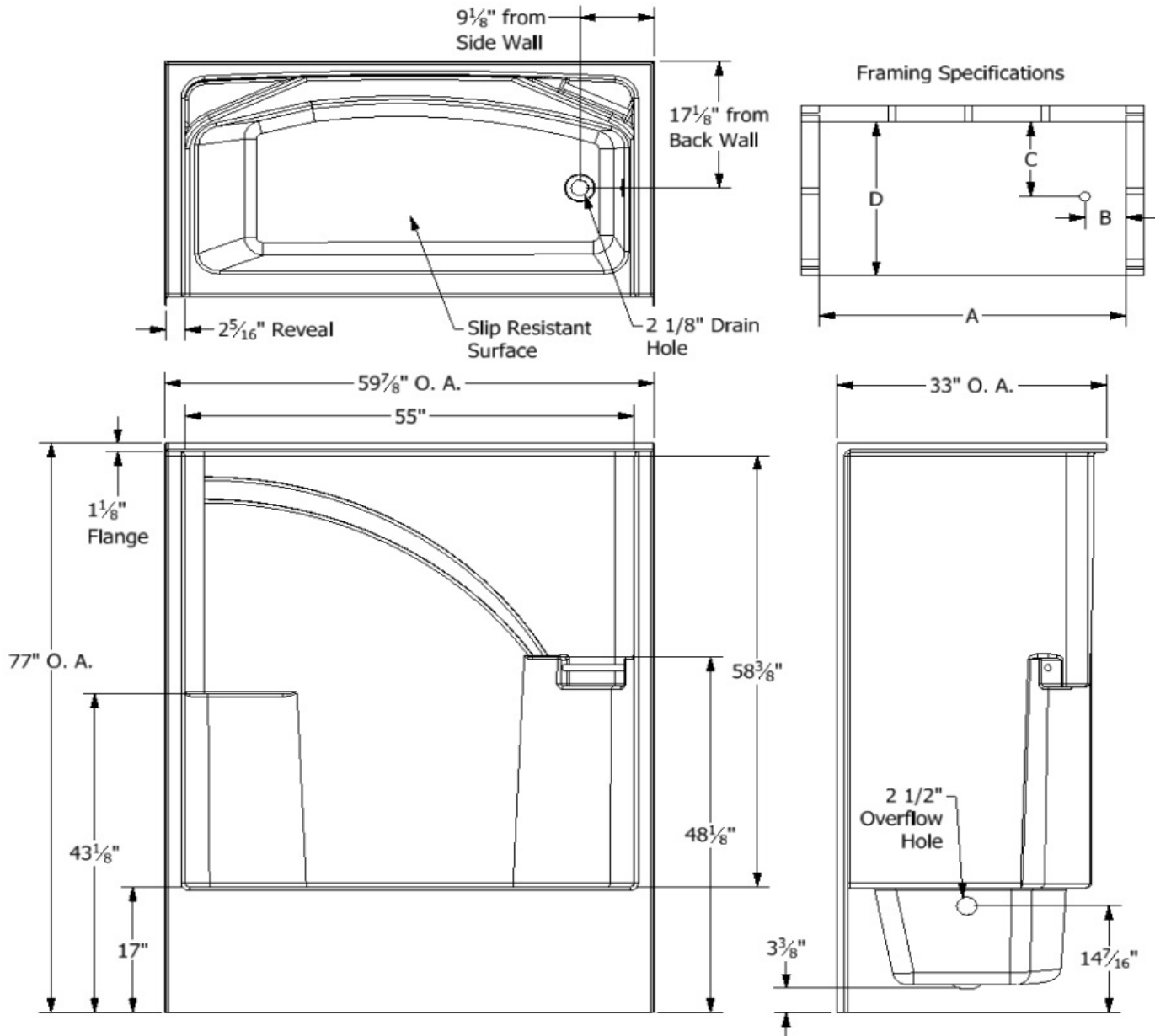
Top of Drain to Bottom of Overflow	Capacity to Overflow Gallons	Top Dimensions		Bottom Dimensions	
		Length	Width	Length	Width
9 1/4"	36.0	52 3/16"	23 1/8"	41 5/16"	17"

Framing Dimensions

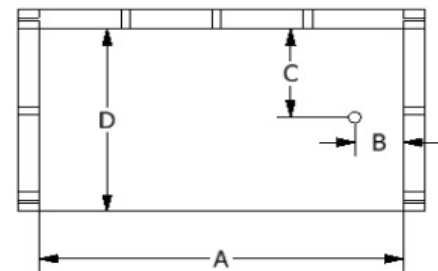
A	B	C	D
60"	9 1/8"	17 1/8"	33"

Enclosure Opening

Length	Width
55"	58 3/8"



Framing Specifications



Certified to conform to
HUD/UM73b, ANSI Z124.1, and
ASTM E- 162 Flame Spread
Rating 200 or less and is under
a program of factory inspection.

Manufactured by Front Line
Mfg., Inc. Leesburg, IN



12/18/12